

Capcom Co., Ltd.

Market: Tokyo

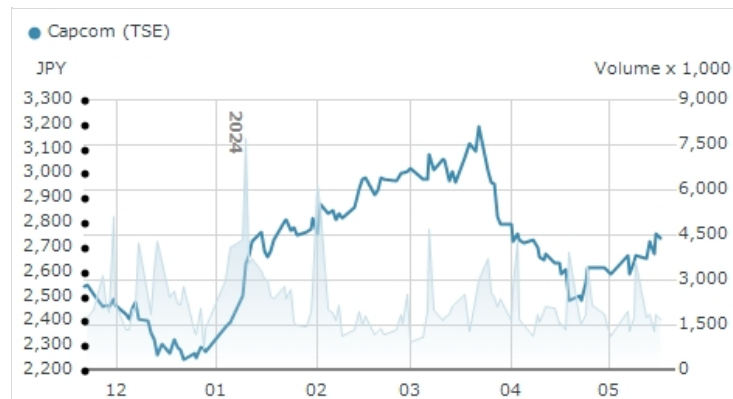
Symbol: 9697

ISIN: JP3218900003

Sector: Information & Communication

Company profile

Capcom is a game software developer based in Osaka. We have grown steadily over the years by leveraging our highly original contents and cutting-edge development expertise, then utilizing original IPs in various areas through our "single content, multiple usage" approach.


Share Data
17/05/2024

Currency	JPY	Volume	1,722,900
Previous Close	2,740	Number of Shares (mil)	533.01
Change (%)	-0.63	Market Cap (mil)	1,460,184.31

Key figures

Millions of yen	2021	2022	2023
Net sales	95,308	110,054	125,930
Operating income	34,596	42,909	50,812
Net income	24,923	32,553	36,737
Cash flows from operating activities	14,625	46,947	21,789
Cash flows from investing activities	(4,233)	(7,426)	(7,679)
Cash flows from financing activities	(6,965)	(9,980)	(22,485)
Yen			
Net income per share	116.74	152.48	174.73
Cash dividends applicable to the year per share	71	46	63
Net assets per share	565.78	686.07	770.54
Millions of yen			
Total assets	163,712	187,365	217,365
Net assets	120,794	146,475	161,129
Shareholders' equity	120,967	144,765	156,979
Paid-in capital	33,239	33,239	33,239
Retained earnings	93,861	117,661	143,519
Capital investment (Tangible fixed assets, net of accumulated depreciation)	2,570	2,965	9,192
Depreciation and amortization	2,791	3,385	3,438
%			
ROE	22.6	24.4	23.9
ROA	16.2	18.5	18.2
Net worth ratio	73.8	78.2	74.1
Number of employees	3,152	3,206	3,332
Number of shares issued	135,446,488	270,892,976	266,505,623

Note: With an effective date of April 1, 2021, Capcom performed a 2-for-1 stock split of its common stock.

Capcom calculated "Net income per share" and "Net assets per share" assuming that the stock split was implemented with an effective date of April 1, 2019.

For "Cash dividends applicable to the year per share" for the year ended March 31, 2021 the above dividends paid are the actual amounts before the stock split.

For dividends for the year ended March 31, 2022, the Company took the stock split into consideration.

Directors

Chairman and Chief Executive Officer (CEO)	Kenzo Tsujimoto
President and Chief Operating Officer (COO)	Haruhiro Tsujimoto

Breakdown of Shareholding by Investor Type

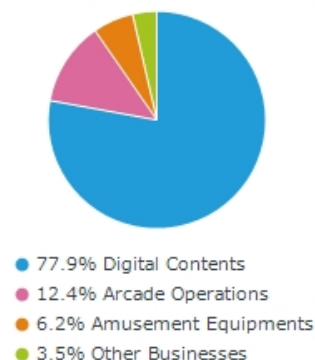
Name	In thousands	%
Financial Institutions	59,214	22.22
Securities Companies	3,348	1.26
Domestic Companies	25,671	9.63
Foreign Investors	90,566	33.98
Individuals and Other Investors	87,704	32.91

Major Shareholders (Top 10)

Major Shareholders	Number of Shares Held (in thousands)	Percentage of Shareholding (%)
The Master Trust Bank of Japan, Ltd. (Trust Account)	33,542	15.74
Crossroad Co., Ltd.	21,365	10.03
JP Morgan Chase Bank 380815	17,594	8.26
Custody Bank of Japan, Ltd., Trust Account	11,581	5.43
Yoshiyuki Tsujimoto	8,077	3.79
Haruhiro Tsujimoto	6,199	2.91
Ryozo Tsujimoto	6,183	2.90
Kenzo Tsujimoto	4,039	1.90
The Master Trust Bank of Japan, Ltd. (Stock Grant ESOP Trust Account 76744)	3,999	1.88
SSBTC CLIENT OMNIBUS ACCOUNT	3,271	1.53

Note: 1. Percentage of Shareholding is calculated excluding Capcom's treasury stock (53,394 thousand shares).

2. The Master Trust Bank of Japan, Ltd. (Stock Grant ESOP Trust Account 76744) is a trust established in conjunction with the introduction of the Stock Grant ESOP Trust. Such shares are not included in the number of treasury stock above.

Breakdown of Sales by Segment

IR Contacts

Capcom Co., Ltd.
3-1-3 Uchihirano-machi,
Chuo-ku, 540-0037 Osaka
JAPAN

Tel: 81-6-6920-3600
Fax: 81-6-6920-5100
www.capcom.co.jp/ir/english/

CAPCOM®
Supplied by © **EUROLAND.com**