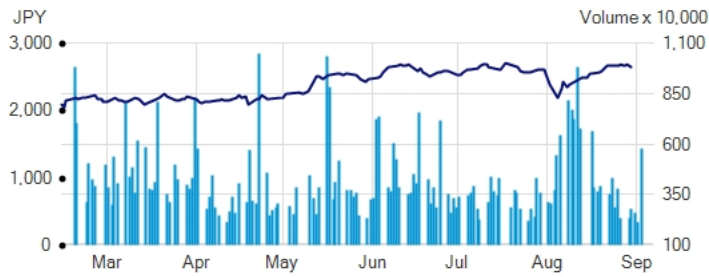


● Olympus Corporation



Share Data		30/08/2024	
Currency	JPY	Previous Close	2,659.50
Change (%)	-1.21	Volume	5,833,800
Number of Shares (mil)	1,178	Market Cap (mil)	3,132,094

Key Figures	For the fiscal years as of ended March 31	
	2023/3	2024/3
Millions of yen		
Revenue	881,923	936,210
Operating profit	186,609	43,598
Operating margin (%)	21.2%	4.7%
Profit attributable to owners of parent	143,432	242,566
Cash flows from operating activities	98,490	42,365
Cash flows from investing activities	-58,414	359,992
Cash flows from financing activities	-143,178	-276,010
Assets	1,508,701	1,534,216
Total equity	641,234	757,186
Interest-bearing debt	340,057	299,616
R&D expenditure	76,866	86,368
Capital expenditure	72,023	80,727
Depreciation and amortization	63,592	65,940
Profit per share (yen)	113.22	199.91
Total equity per share (yen)	510.62	649.59
Dividends per share (yen)*	16.0	18.0
Consolidated total return ratio (%)	48.8%	82.9%

* The Company conducted a stock split at the ratio of four shares for one ordinary share on April 1, 2019.

Olympus is passionate about creating customer-driven solutions for the medical. For more than 100 years, Olympus has focused on making people's lives healthier, safer and more fulfilling by helping to detect, prevent, and treat disease and ensuring public safety.

Olympus is headquartered in Tokyo, Japan, with more than 30,000 employees worldwide in nearly 40 countries and regions.

Type of shareholders



- 48.7 % Foreign institutions and individuals
- 35.9 % Japanese financial institution
- 5.1 % Japanese individuals and others
- 4.1 % Treasury stock
- 3.4 % Japanese securities firms
- 2.8 % Other Japanese corporations

Principal Shareholders	As of Mar 31, 2024	
	Number of Shares	Percentage (%)
The Master Trust Bank of Japan, Ltd. (trust accounts)	237,227,500	20.35
Custody Bank of Japan, Ltd. (trust accounts)	90,256,100	7.74
SMBC Trust Bank Ltd. (Sumitomo Mitsui Banking Corporation's retirement benefit trust account)	39,509,300	3.39
SSBTC CLIENT OMNIBUS ACCOUNT	37,975,376	3.26
JP MORGAN CHASE BANK 385632	27,218,957	2.34
STATE STREET BANK WEST CLIENT - TREATY 505234	22,672,912	1.95
STATE STREET BANK AND TRUST COMPANY 505223	21,827,589	1.87
Nippon Life Insurance Company	21,258,572	1.82
GOLDMAN, SACHS & CO. REG	16,953,644	1.45
BNYM AS AGT / CLTS 10 PERCENT	16,132,479	1.38

* The holding ratio is computed by excluding treasury stock (49,514,907 shares).

Net Sales Ratio by Business Segment



- 62.7 % ESD
- 36.0 % TSD
- 1.3 % Others

Olympus Corporation

Shinjuku Monolith,
3-1 Nishi-Shinjuku 2-chome,
Shinjuku-ku, Tokyo 163-0914,
Japan
TEL: 03-6901-3929

OLYMPUS

www.olympus-global.com/en/
Supplied by © EUROLAND.com